

## Short Report



Technical Museum of Pforzheim's Jewellery and Watchmaking Industries  
I Technisches Museum der Pforzheimer Uhren- und Schmuckindustrie

## Technical Museum of Pforzheim's Jewellery and Watchmaking Industries

Bleichstraße 81  
75173 Pforzheim

Tel: +49 7231 39 2869  
Fax: +49 7231 39 2591

[technischesmuseum@pforzheim.de](mailto:technischesmuseum@pforzheim.de)  
[www.technisches-museum.de](http://www.technisches-museum.de)

### Welcome!

The museum radiates an aura of vibrant activity; it smells like oil and metal in here, and the machines make a lot of noise! In the building of the former Kollmar Jourdan jewellery manufactory, visitors have an opportunity to gain insights into the world of Pforzheim's traditional jewellery and watchmaking industries, which once dominated the global market. It's a place where history comes alive, where visitors can witness how pieces of jewellery are created, how metal is melted and shaped, and how complex movement blanks, watch dials or cases are made. Whether it's sand casting, electroplating or rolling: the manufacture of jewellery and watches has always involved many processes and techniques. Starting from the drawing of an initial sketch all the way through to the production process itself, visitors can observe the individual worksteps involved and marvel at traditional manufacturing techniques employed using original historical machines.

# TEST RESULT

---

for

**Technisches Museum der Pforzheimer Schmuck- und Uhrenindustrie**

75173 Pforzheim, Certificate-ID: PA-13330-2022



This offer was classified according to  
the criteria of the nationwide label

**»Tourism for All«**

and, in the period from

**June 2023 – May 2026**

is entitled to use the label

**»Accessibility checked«**

and the associated pictograms  
in accordance with the contract.



## Technical Museum of Pforzheim's Jewellery and Watchmaking Industries

Technisches Museum der Pforzheimer Uhren- und Schmuckindustrie



## Technical Museum of Pforzheim's Jewellery and Watchmaking Industries

Technisches Museum der Pforzheimer Uhren- und Schmuckindustrie

---

## Overview

- Distance to the jewellery museum 5 minutes (combined ticket)
- Black Forest Card attraction

## Accessibility at a glance

- stepless access to the building (via the side entrance) and all rooms
- 85 cm minimum width of all passages/doors
- WC for people with disabilities
- assistance dogs welcome
- inductive hearing system at the ticket office and devices for guided tours

# Information for people with walking difficulties and wheelchair users

All areas relevant for testing meet the quality criteria of the label "**Accessibility certified – partially accessible for people with walking disabilities**".

Some **information on accessibility** are listed below. For detailed information please see the evaluation report.

- There is no parking lot available.
- The bus stop "Rodstraße" is 50 m away.
- There is a higher threshold at the main entrance.
- There are several steps in front of the cash desk.
- Barrier-free access to the exhibition is possible via the side entrance. Please register in advance to be able to use this entrance. There is a ramp with a 12% incline in front of the side entrance.
- All evaluated rooms and facilities available to the guests are accessible without steps.
- All evaluated passageways/doors available to the guests are at least 85 cm wide.
- The exhibits are predominately visible when seated. Information is predominately readable when seated.
- Guided tours for people with walking impairments and wheelchair users are offered on request. A reservation in advance is necessary.
- Offered aids: folding stools

## Public WC for people with disabilities

- The WC is located in the office area. Please ask for directions!
- The manoeuvring spaces are:  
in front of the sink and the WC at least 150 cm x 150 cm;  
to the left of the WC 40 cm x 55 cm; to the right of the WC 90 cm x 55 cm.
- There are fold-up grab rails to the left and right of the WC.
- The washbasin has limited access.
- There is no alarm trigger.

# Information for people with hearing impairments and deaf people

All areas relevant for testing meet the quality criteria of the label "**Accessibility certified – accessible for people with hearing impairment**".

Some **information on accessibility** are listed below. For detailed information please see the evaluation report.

- There is an audio induction loop system at the cash desk.
- The information on the exhibits is predominately provided in writing.
- Guided tours for people with hearing disabilities using inductive devices are available upon request. A reservation in advance is necessary.

## Information for visually impaired and blind people

Some **information on accessibility** are listed below. For detailed information please see the evaluation report.

- Assistance dogs are allowed in relevant areas/rooms.
- Almost all evaluated and usable areas for the guest are well illuminated, i.e. bright and glare-free.
- The signage is designed in clearly legible and contrasting font.
- Stairs have predominantly visually contrasting edges.
- The exhibits are usually well illuminated.
- Information on the exhibits is predominately provided in writing and is visually rich in contrast.
- Information is not available in Braille or prismatic font.

## Information for guests with cognitive impairments

Some **information on accessibility** are listed below. For detailed information please see the evaluation report.

- The name or logo of the museum is clearly recognizable from the outside.
- The information on the exhibits is predominately provided in writing, but not in easy language.

# Image Gallery

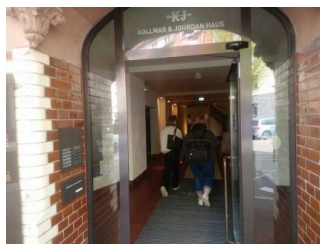
We have put together some photos from the company / offer for you. You can find more photos in the detailed reports.

---



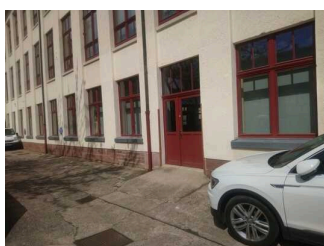
Public transportation

©Bruno Kohl



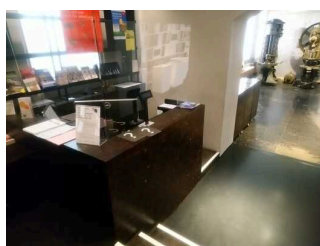
Main entrance

©Bruno Kohl



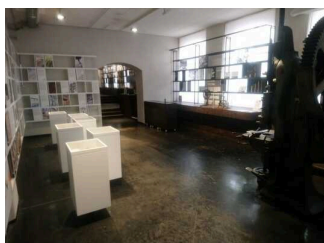
stepless side entrance

©Bruno Kohl



Cash desk / Ticket counter

©Bruno Kohl



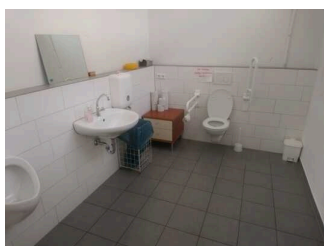
Showrooms

©Bruno Kohl



Showrooms

©Bruno Kohl



WC for people with disabilities

©Bruno Kohl

# Information on the "Tourism for All" labeling system

**All establishments and locations** certified with the label "Tourism for All" meet the following quality criteria:

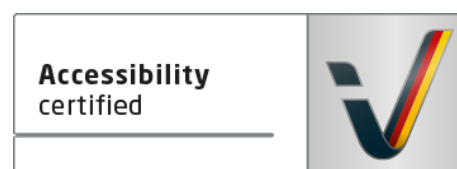
- Data and information on accessibility are collected and checked on site by **external, specially trained evaluators**. The method is not based on self-assessments.
- Data on accessibility is available **in detail** and can be viewed by the guests.
- At least one staff member has successfully passed a **training** on "**Accessibility as a comfort and quality feature**".

## The labeling – explanation of the logos and pictograms

The label "**Information about Accessibility**" indicates that detailed and verified information on accessibility is available for all groups of people.



The label "**Accessibility certified**" is based on "Information about Accessibility". It means that the quality criteria defined for specific groups of people are met partially or completely.



The label "**Accessibility certified**" is available in two requirement levels:

### "Accessibility certified: partially accessible".

The quality criteria are partially fulfilled for the pictured group of people, i.e. the establishment/location is partially accessible for wheelchair users. The "i" in the pictogram indicates that it is recommended to read again carefully whether the offer meets all (your oder the guest's) individual requirements.



### "Accessibility certified: accessible".

The quality criteria are fulfilled for the pictured group of people, i.e. the establishment/location is accessible for wheelchair users.





There are defined quality criteria for **seven groups of people** and a **specific pictogram** for each group.

People with walking disabilities



Wheelchair users



People with hearing impairment



Deaf people



People with visual impairments



Blind people



People with cognitive impairments

